

STOP GRUP A.Ş.®



STOP BARIYER®



ANTI TERROR ROAD BLOCKER DATASHEET



Stop Grup Güvenlik sistemleri İnş. San. Tic. A.Ş.
Güzelce Mah. İskenderun Cad. No:6 Büyükçekmece İstanbul, TURKEY

Phone: +90 212 868 08 90

Fax: +90 212 868 08 87

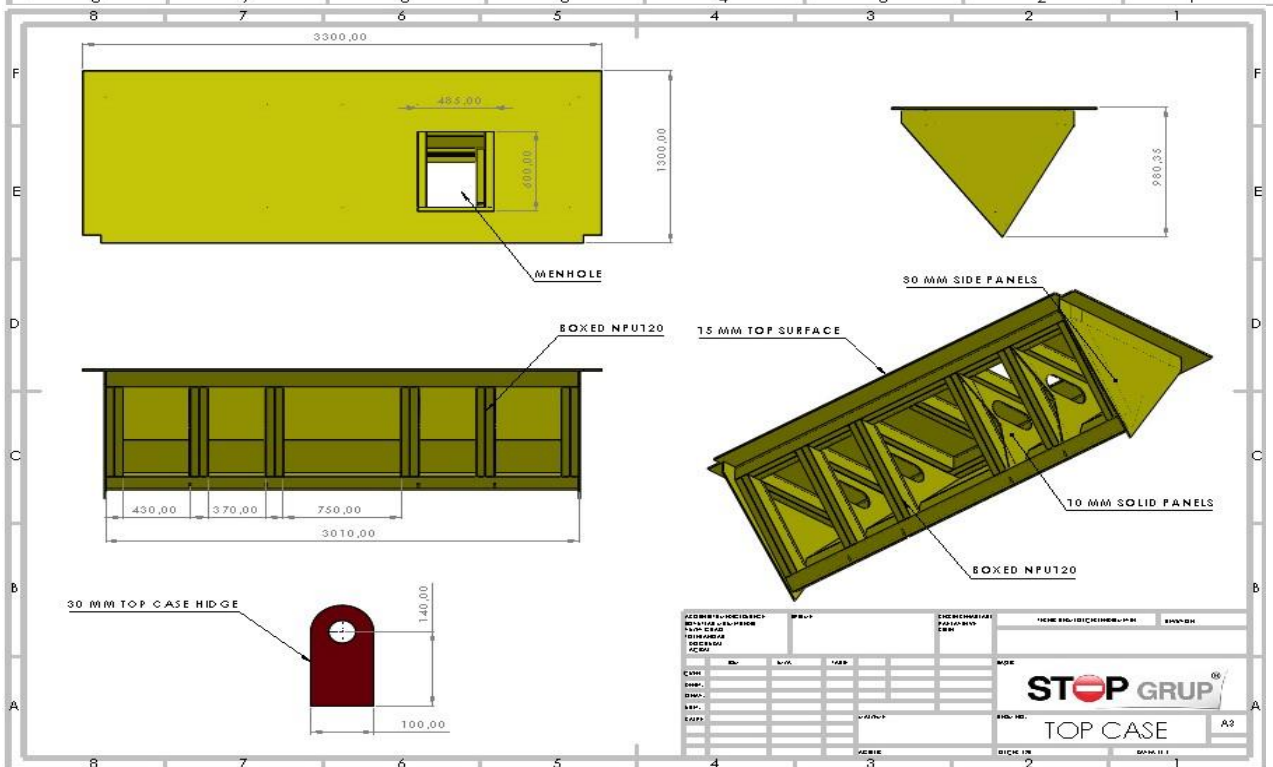
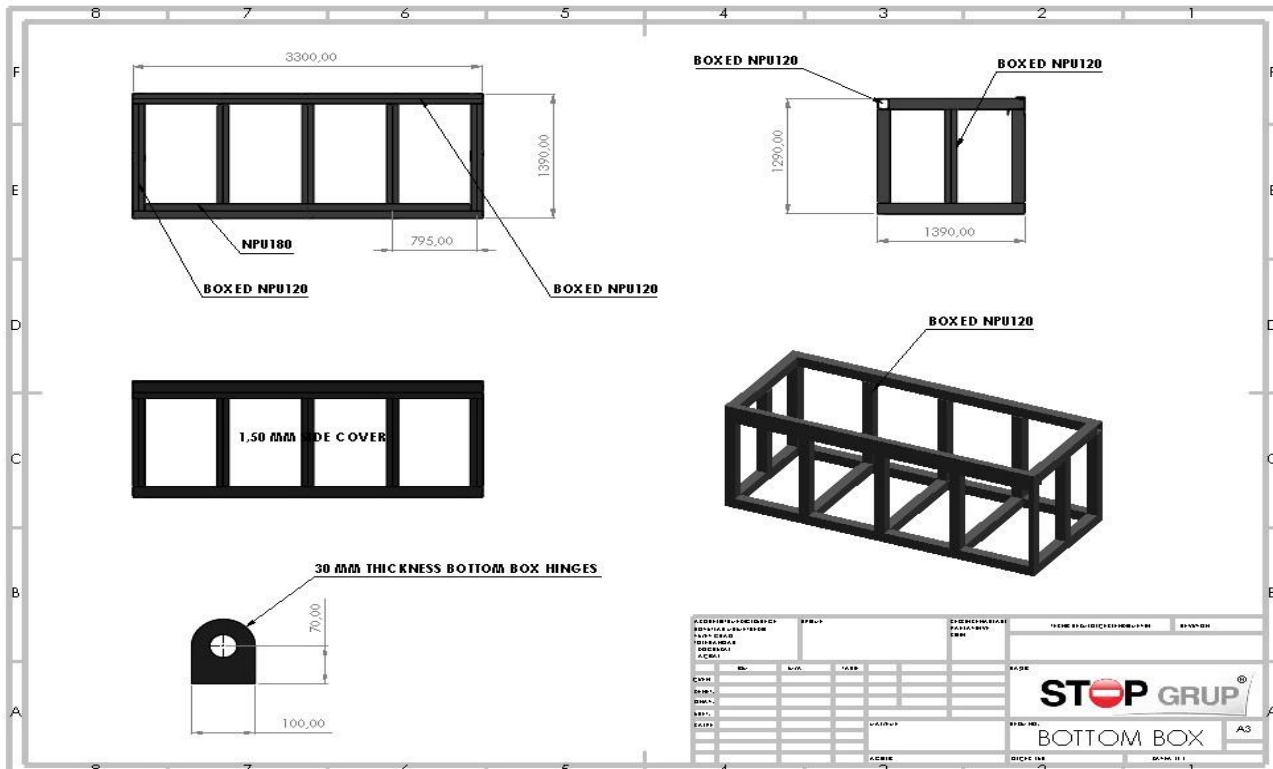
STOP GRUP A.Ş.[®]

StopGrup Road Blocker Data Sheet - Technical Specs

Frame Construction Supports	NPU 120 and NPI 180
Base covers	1.5 mm metal sheet
Moving Part Front & Side Covers	Front 8 mm & Side 10 mm sheet
Moving Part	ST 37/44 (10 / 20 mm)
Width Options	2 mt - 3 mt - 4 mt - 5 mt - 6mt
Moving Part Height Options	700 - 800 - 900 - 1000 - 1100 mm
Moving Part Top Cover	15 mm ST 37 Steel
Hinges	40 mm Cr20Mn5
	Special Grease System
Maintenance Entrance	Available
Load-carrying Capacity per Axle	80 Tons
Paint	Yellow - Black EPOXY Paint
	Red "STOP" writing on front plate
Operating Voltage	380 VAC 50 Hz (\pm %20)
Operating Speed	0,2 m/s
Operating Frequency	500 - 3.000 Cycle
Engine Power	3 - 4 - 5,5 kw - 1500 rpm
Hydraulic Pump Operating Voltage	380 VAC 50 Hz
Hydraulic Hose Pressure Resistance	Min 300 Bar
Time of Opening-Closing	4 - 8 seconds
Remote Control Operating	433,92 Mhz
Electronic Board	Access Control Compatible
	12VDC and 24VDC output
System Protection	Loop Detection
System Operating Temperature	-20°C/+70°C
Operating System	Hydraulic
Electronic Board Control	PLC
Start-Stop	Remote Control
System Security	Manual control of Road Blocker at
	Power Failure
System Security2	In case of an attack to hydraulic
	and electrical systems, piston does
	not goes lower thanks to twin
	lockdown system
Ingress Protection	IP 55

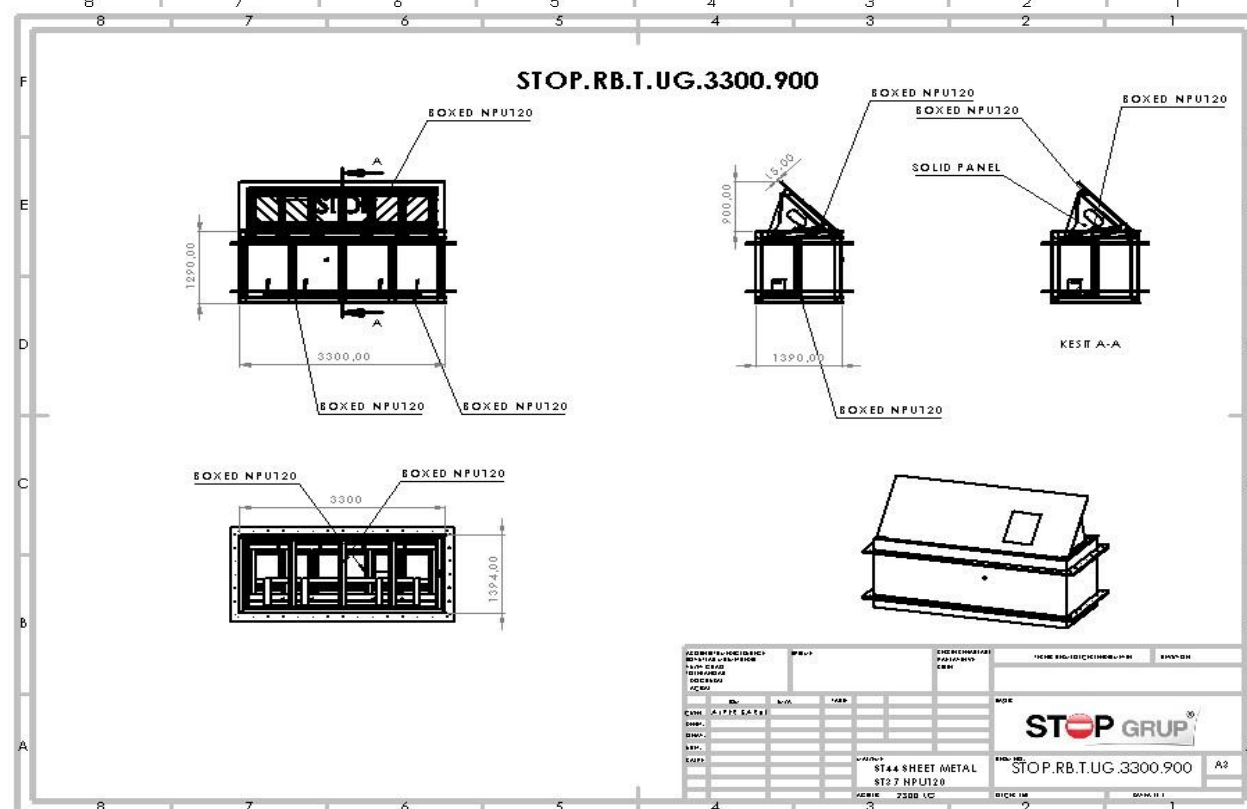
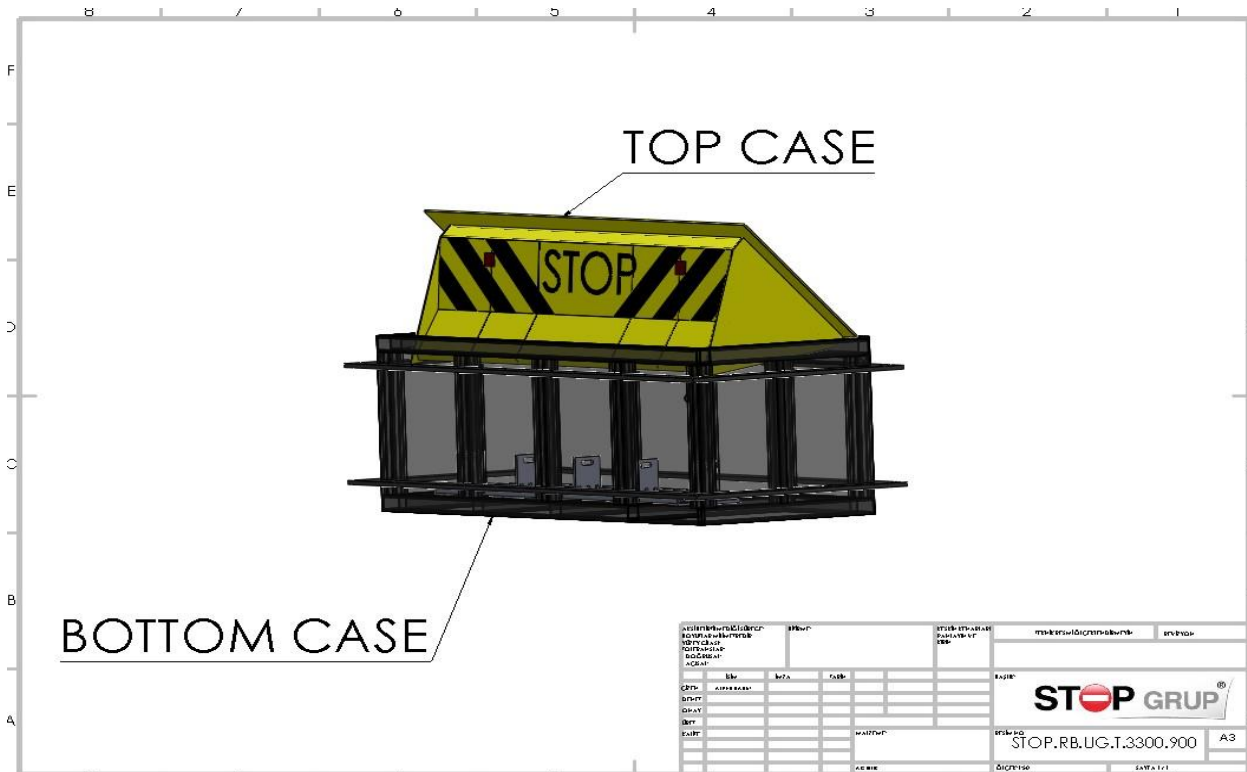
STOP GRUP A.Ş.®

StopGrup Road Blocker Data Sheet - Technical Drawings Body Parts



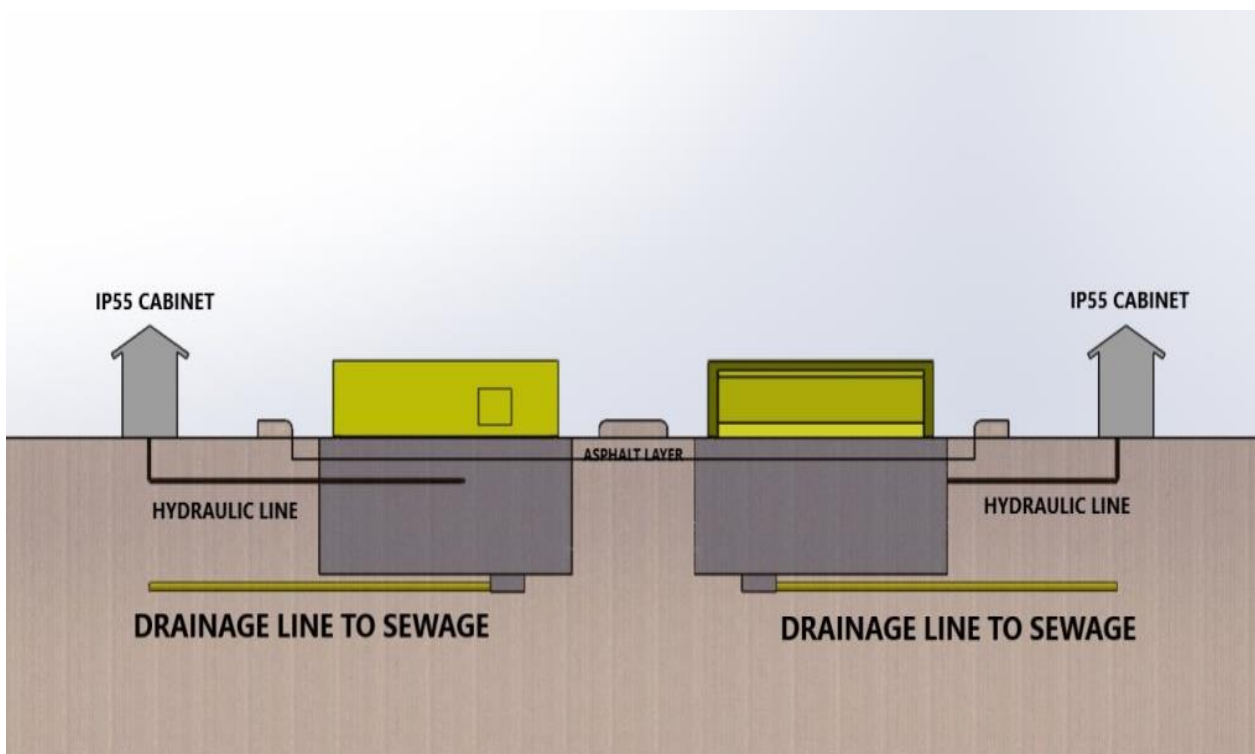
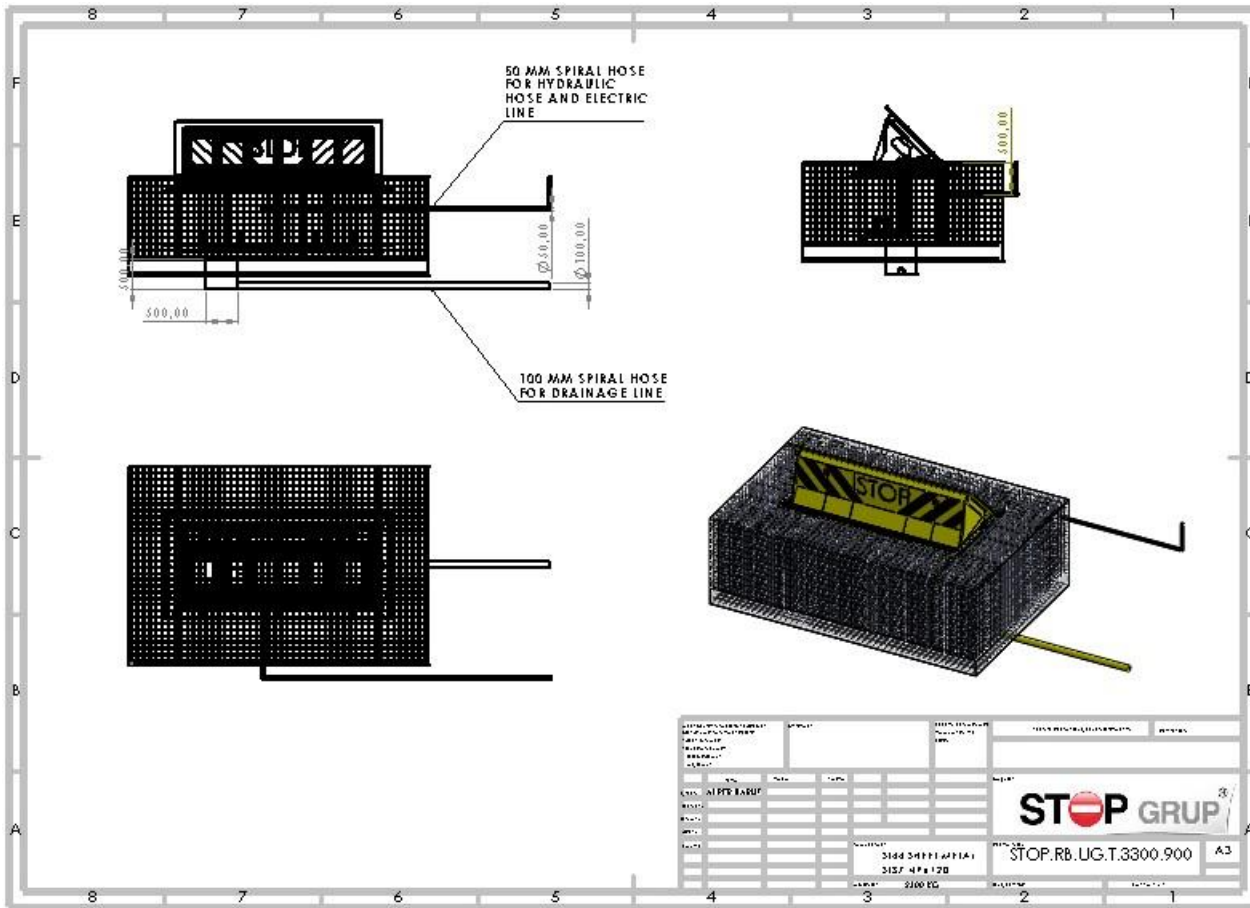
STOP GRUP A.Ş.®

StopGrup Road Blocker Data Sheet - Total Body Montage Technical Drawing

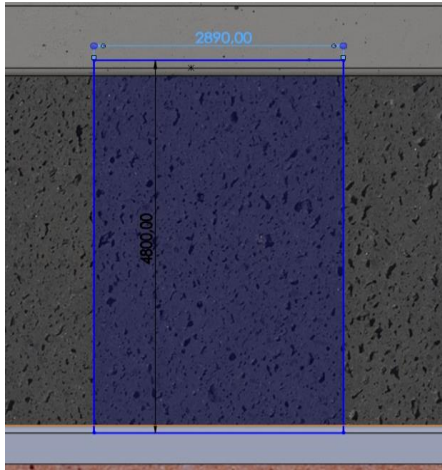


STOP GRUP A.Ş.®

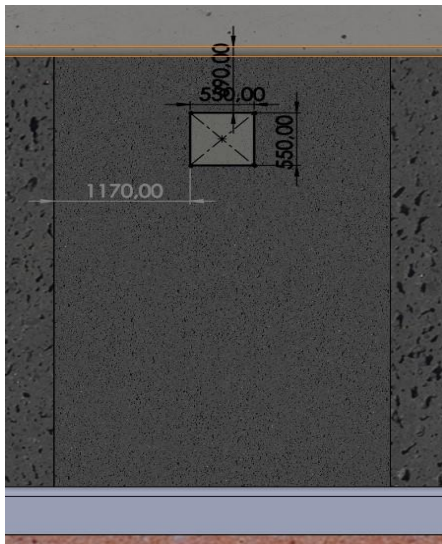
StopGrup Road Blocker Data Sheet – Drainage



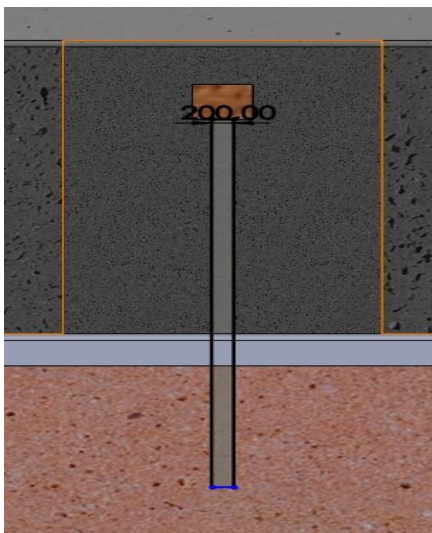
StopGrup Road Blocker Data Sheet – Drainage



- Installation of Road Blocker starts cutting asphalt or concrete as designated measurements.
- After that start to dig 300 mm more than Road Blockers height. This measurement for this product is 1590 mm.

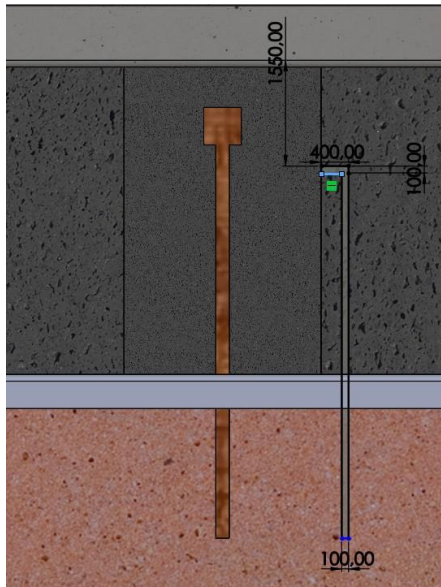


- End of digging have to open a hole for drainage box as measurements in drawing.
- This hole must have 200 mm deepness.



- After opening box hole start to dig for drainage line till sewage
- Drainage line digging will be till bottom of box hole for sanitary flow and this measurement is 1790 mm
- Drainage line must be minimum 200 mm width because will put 100 mm drainage hose in this line.

StopGrup Road Blocker Data Sheet – Drainage

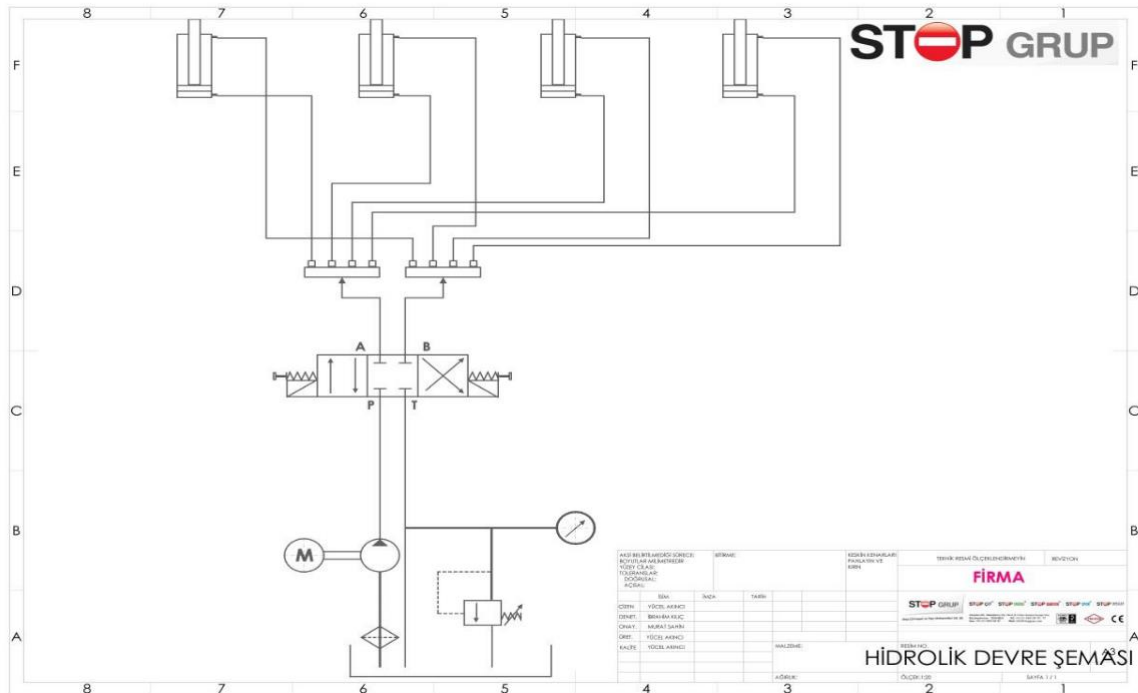
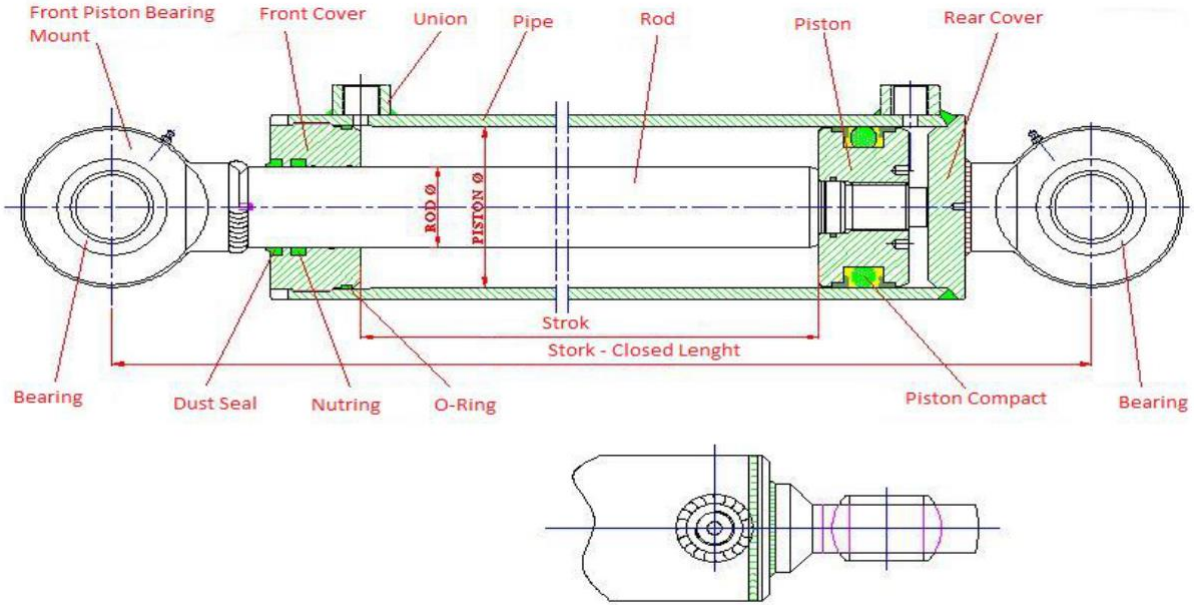


- For Hydraulic hoses and Electrical cables for sensors have to put a spiral hose which 50 mm dia.
- This line have to dig till IP55 Cabinet
- This line is 100 mm width and 550 mm deepness.

- After this operations will put hoses and drainage box in places.
- After putting this materials will apply Mat Plan as drawing measurement.
- First of all bottom concrete as C35 will be apply on mat, in this point have to pay attention for holes and box is on their place and protected from concrete.
- After the concrete dries the road blocker will be placed in place and the side concrete will be applied using the road blocker formwork.
- After the concrete process is completely completed, hydraulic and electrical connections will be made inside the road blocker.
- On the other hand, the cabin with the hydraulic unit and electrical panel will be mounted and road blocker test operations will be started after the connections are provided.

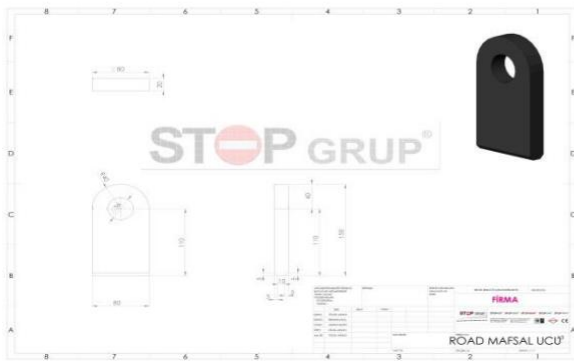
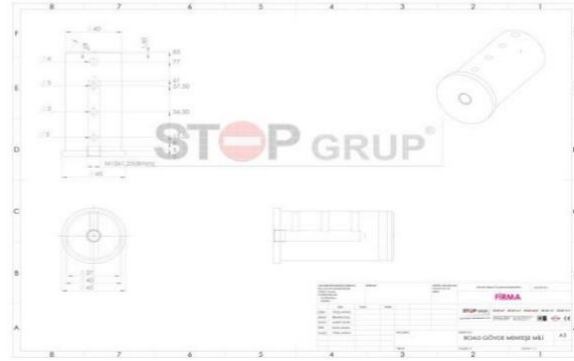
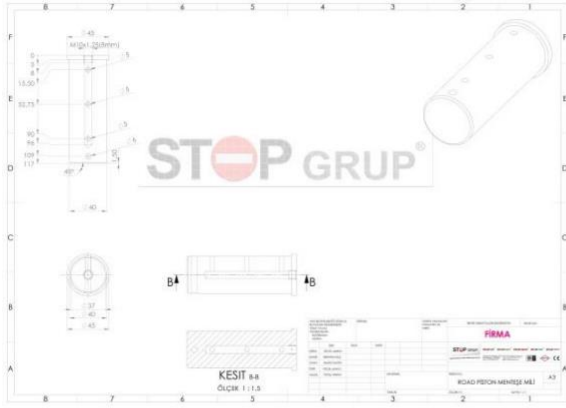
STOP GRUP A.Ş.®

StopGrup Road Blocker Data Sheet - Piston and Hydraulic Unit Scheme



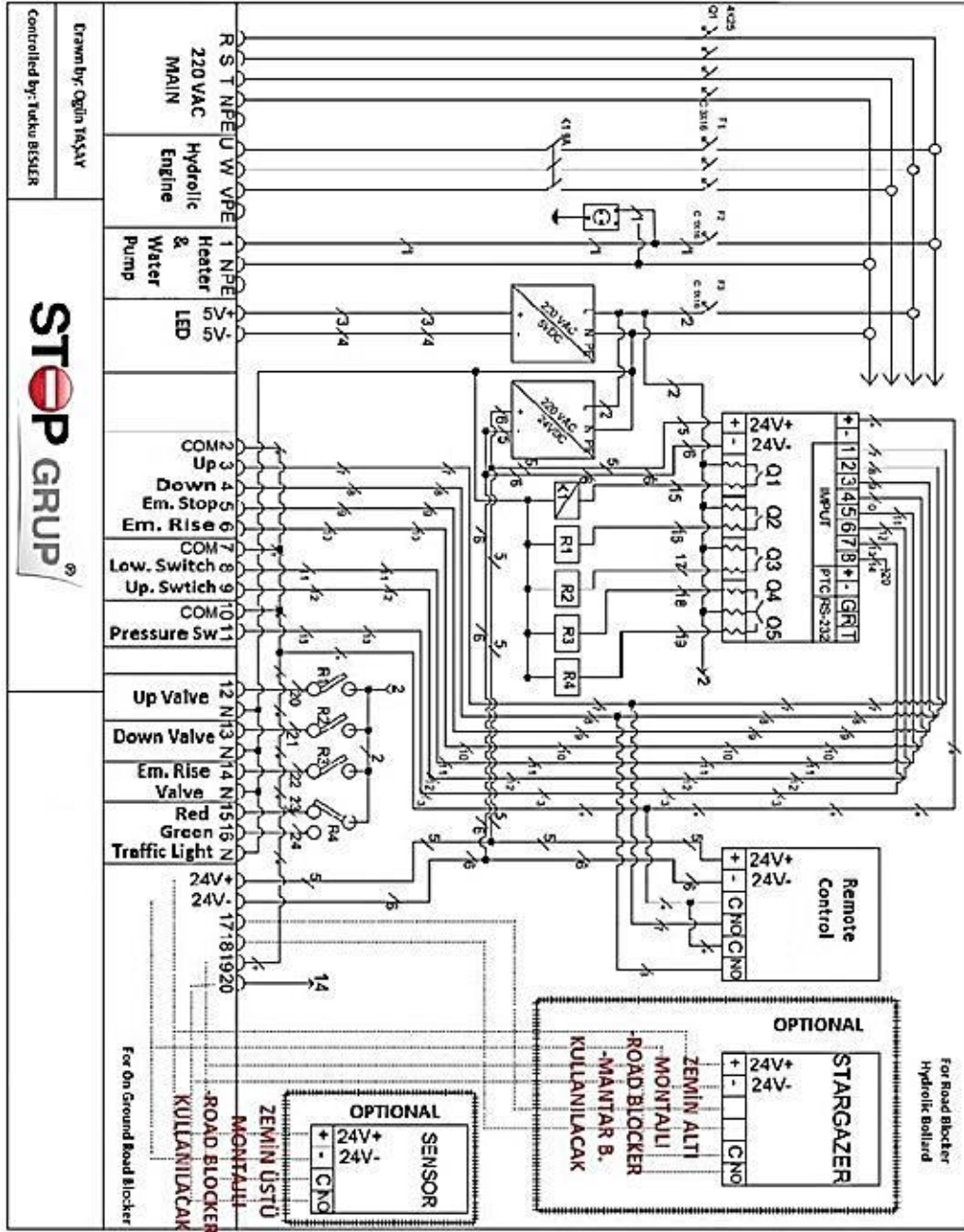
STOP GRUP A.Ş.®

StopGrup Road Blocker Data Sheet - Shafts and Knuckles



STOP GRUP A.Ş.®

StopGrup Road Blocker Data Sheet - Electrical Diagram



STOP GRUP A.Ş.[®]

StopGrup Road Blocker Data Sheet - Final Installation

