

STOP GRUP A.Ş.

STOP BARIYER



TELESCOPIC ROAD BLOCKER INSTALLATION AND MAINTENANCE GUIDE



APPENDIX

A. GENERAL INFORMATION

B. TECHNICAL SPECIFICATIONS

C. SYSTEM COMPONENTS

C.1. BODY-BOTTOM BASE CHASSIS

C.2. BODY-MOVING BODY CHASSIS

C.3. PISTON

C.4.1.ELECTRICAL CABINET

C.4.2.ELECTRICAL SCHEME

C.5.HYDROLIC UNIT

D. INSTALLATION

D.1. PLACEMENT

D.2. REBAR REINFORCEMENT

D.3. CONNECTIONS

D.4. LOOP CABLES

E. OPERATING

F. SAFETY

G. MAINTENANCE

H. TROUBLESHOOTING

I. CERTIFICATIONS

J. WARRANTY

K. REFERENCES

STOP GRUP A.Ş.[®]

A GENERAL INFORMATION

Road Blocker can be integrated into various parking systems or airport, port, customs, government buildings, banks, prisons, military areas, security, warehouses and so on. It is a technical component that can be used in main and secondary entrance doors of places requiring high security measures and can be installed as a single unit.

In addition to its deterrent effect, it contributes to the real security. These devices are usually hidden, buried or visible at the entrance of a protected area. Embedded systems are automatically sewed in the event of an alarm.

Hydraulic oil pressure, steel body. In addition to being controlled remotely, it can also be controlled manually.

Road Blocker is the most reliable solution especially for places where bombs are threatened by attack. Even if the attack is fast and with high tonnage vehicles, it is not possible to keep the vehicle moving as a result of damage to the wheels and the front of the vehicle.



B TELESCOPIC ROAD BLOCKER TECHNICAL SPECIFICATIONS

Body	NPU and NPI
Body Structure	ST 37 Steel
Top Sheet	10 mm
Front and Side Sheets	5 mm
Length	3 meter
TELESCOPIC Part Closed	400 mm
Height	
Load Capacity Per Axle	30 Ton
Paint	Yellow - Black Electrostatic Paint STOP writing at impact surface
Operating Voltage	380 VAC 50 Hz (\pm %20)
Operating Frequency	500 - 3.000 Rounds
Motor Power	3 - 4 - 5,5 kw - 1500 rpm
Hydraulic Pump Operating Voltage	380 VAC 50 Hz
Hydraulic Hose Pressure Strength	Min 300 Bar
Opening and Closing Time	4 - 8 sn
Remote Control and Receiver	433,92 Mhz
Electronic card	Compatible to Access Systems 12VDC ve 24VDC çıkış
System Security	Loop Detector
System Operating Temperature	- 20 °C / + 70 °C
Drive System	Hydraulic
Circuit Control	PLC
Start-Stop	Remote Control
Extra Security1	To be able to control Road Blocker with hand pump in case of power failure
Extra Security2	Twin locking system will prevent shutting down in case of a physical attack on hydraulic and electrical system. Moving parts will not close itself.
Ingress Protection	IP 55

C TELESCOPIC ROAD BLOCKER SYSTEM COMPONENTS

C.1. BODY-BOTTOM BASE CHASSIS

C.2. BODY-MOVING BODY CHASSIS

C.3. PISTON

C.4.1.ELECTRICAL CABINET

C.4.2.ELECTRICAL SCHEME

C.5.HYDROLIC UNIT

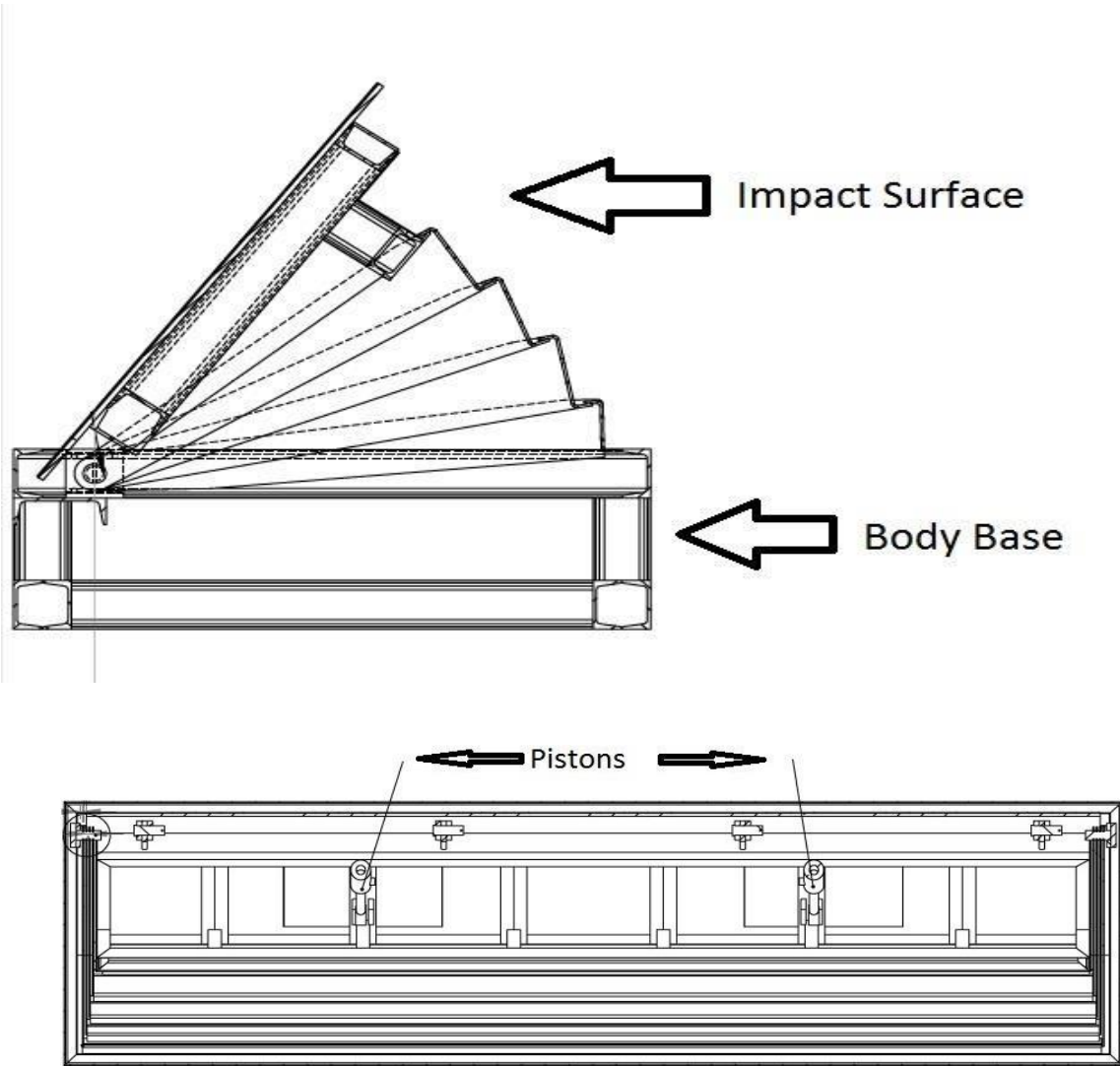


C TELESCOPIC ROAD BLOCKER SYSTEM COMPONENTS

C.1. BODY-BOTTOM BASE CHASSIS

C.2. BODY-MOVING BODY CHASSIS

C.3. PISTON



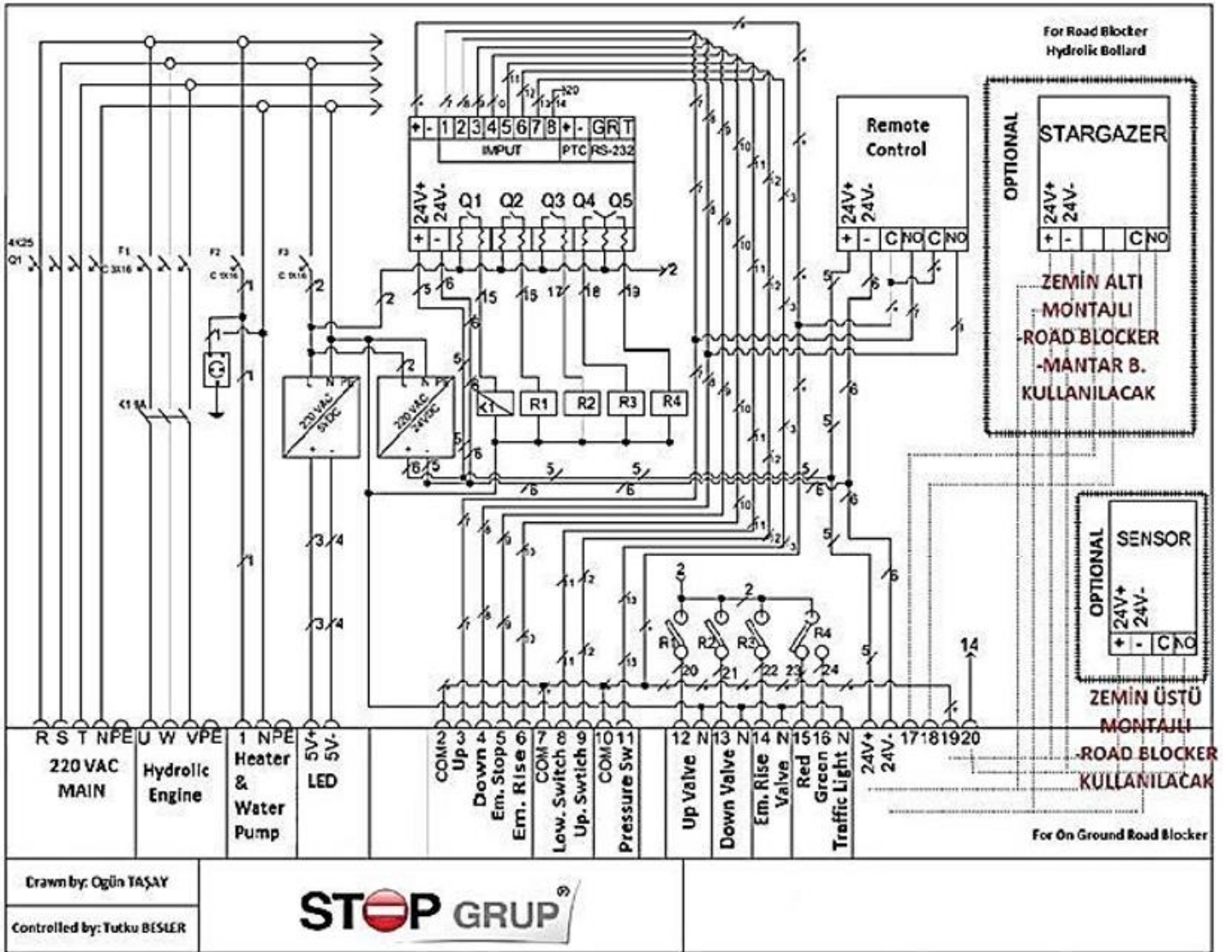
C.4.1.ELECTRICAL CABINET



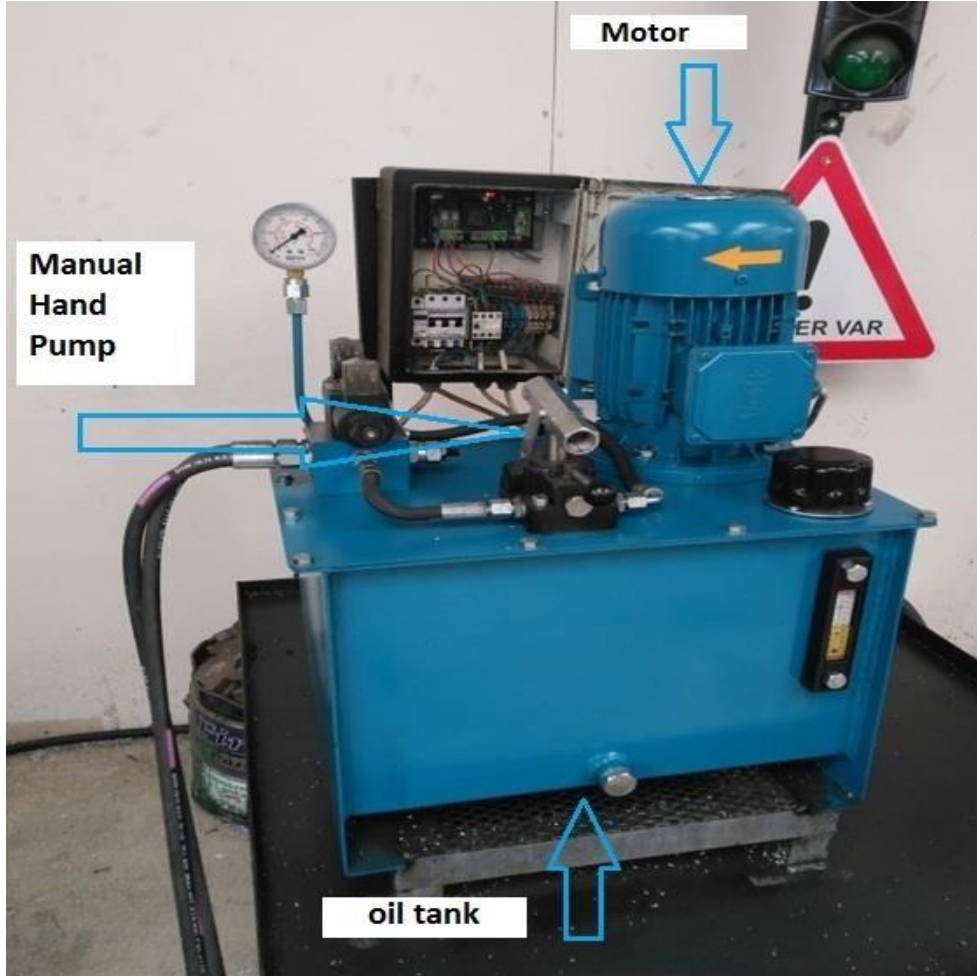
The electrical panel contains fuse, contactor, terminal blocks, PLC(Gemo or Siemens) , safety card (loop detector card), leakage current relay and receiver for control. The PLC unit used in the system is capable of meeting the additional features required. Security card Detects metal mass, vehicles. It ensures that the barrier is not opened when the vehicle is on it. It has detection distance up to 1.5 - 2 m. Optionally, if the emergency button is added, the loop detectors can be deactivated and the system can operate while on the vehicle.

C TELESCOPIC ROAD BLOCKER SYSTEM COMPONENTS

C.4.2.ELECTRICAL SCHEME



C.5.HYDROLIC UNIT



The oil tank on the underside of the hydraulic unit has a thermometer and oil level indicator on the housing. On the top side, there is the tank cap (the oil must be in the lid), the motor and the manual hand pump.

The manual hand pump is used to operate the system manually when the engine is not running, such as a power failure.

By placing the pump arm on the manual hand pump in the figure, and by rotating the small arm to left for upwards move and right for downwards move, the system is operated by manually moving up and down.

Stop Grup Güvenlik Sistemleri İnş. San. Tic. A.Ş.

Güzelce Mah. İskenderun Cad. No:6 Büyükçekmece İstanbul, Türkiye

Phone: +90 212 868 08 90

Fax: +90 212 868 08 87

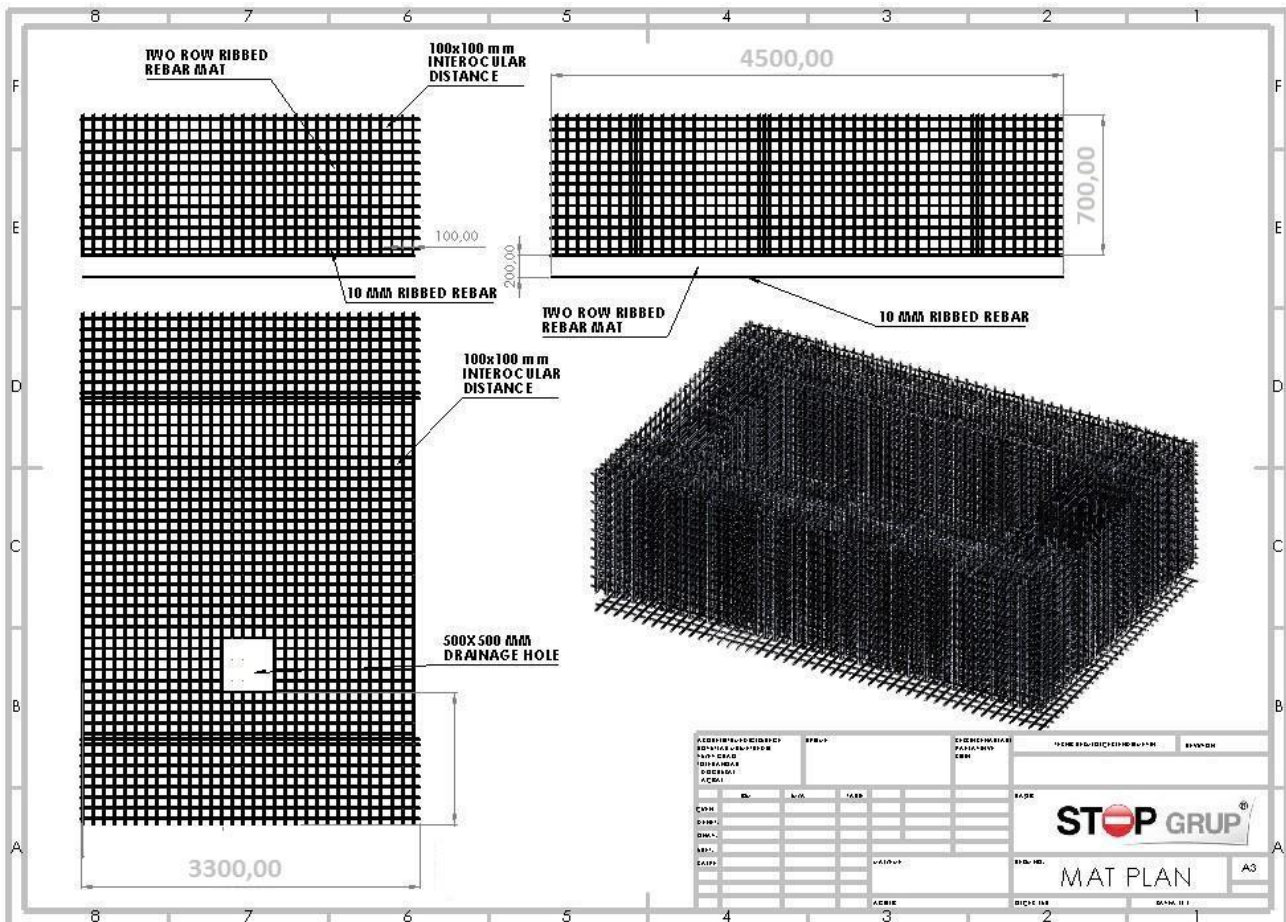
D.1. PLACEMENT



The TELESCOPIC road blocker is lowered to the excavation site with the help of a crane, leveled and put in place.

D TELESCOPIC ROAD BLOCKER INSTALLATION

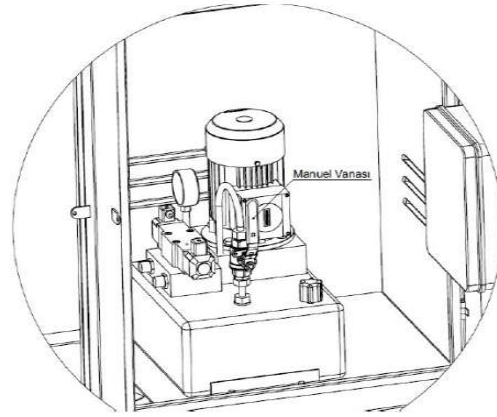
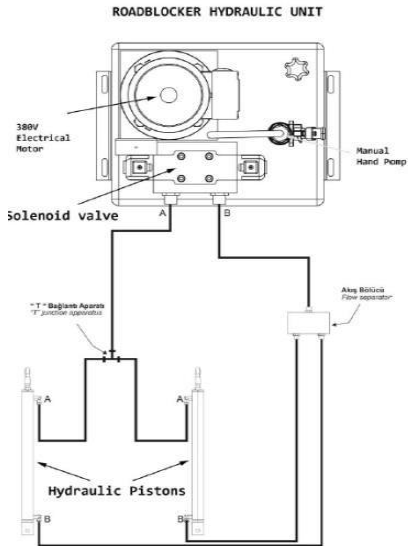
D.2. REBAR REINFORCEMENT



For apply Reinforcement plan will use 10 mm rebar, Reinforcement rebars joints shall be with wire interocular distance 100x100 mm, whole body of reinforcement outside measurement must be 3300x4500 mm and two row in the bottom, for drainage box shall be a hole in the reinforcement body.

D TELESCOPIC ROAD BLOCKER INSTALLATION

D.3. CONNECTIONS



Hydraulic unit hose connections are done as shown.

D TELESCOPIC ROAD BLOCKER INSTALLATION

D.4. LOOP CABLES

Perimeter (2a + 2b)	Number of rounds of the cable
4 - 5 meters	6 Spins
5 - 6 meters	5 Spins
6 - 15 meters	4 Spins
15 - 25 meters	3 Spins



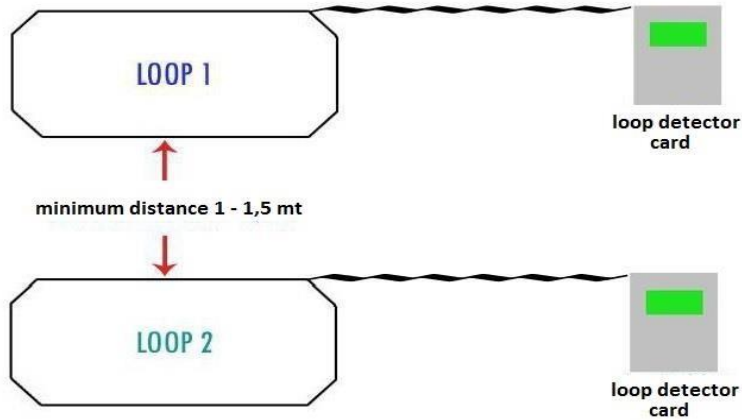
Loop Area corners Cut 90 Degree
(Not Recommended)



Loop Area corner Cut 45 Degree
(Recommended)



twisted cable example





Ensure that all hydraulic and electrical connections of the Road Blocker are properly carried out.

The remote control is used to operate the correctly constructed barrier.

Barrier with the opening button on the security function is fulfilled.

The barrier with down button allows downward passage.

In the optional panic button addition, the emergency starting system is activated and the product is lifted in 1 second and provides safety.

Road Blocker to work safely without loss of life and property issues that should be considered below.

The periodic checks specified in the maintenance chart of the system must be carried out.

Any malfunctions on the system should be reported to authorized personnel.

In the event of inconvenience, the system path must be left electrically disabled.

When the road will be opened to traffic and vehicles will pass;the vehicles must not be allowed to pass unless the barrier is closed and its motor has stopped working.

The barrier should not be touched by hand and foot while in motion.

Vehicles should not be allowed to approach the barrier more than 2 meters away, so the driver of the vehicle should be able to see if the barrier is fully opened or fully closed.

Hydraulic hoses between the hydraulic unit and the barrier should not be allowed to touch anyone other than authorized. High pressure oil is present in the hoses.

Protective equipment such as helmets, gloves, steel toe shoes, goggles and work clothing should be used when entering the barrier for maintenance and intervention.

Always use grounding in the electrical installation to which the system is connected.

Broken or bore hydraulic equipment should not be repaired on-site, replaced with new ones, otherwise accidents caused by pressurized operation of the system may occur.

G	TELESCOPIC ROAD BLOCKER MAINTENANCE
---	-------------------------------------

This periodic maintenance chart should be followed regularly for Road Blocker.

Maintenance To Be Done	In Every
1. Checking of sealing of hydraulic connection hoses and records	2 Months
2. Control of the solenoid valve in the drive system	6 Months
3. Double-acting hand pump control on the hydraulic unit	2 Months
4. Control of hydraulic unit manometer	6 Months
5. Control of hydraulic unit thermometer	2 Months
6. Control of oil tank in hydraulic unit and intervention if oil level is observed	2 Months
7. Control of hydraulic pistons and piston hose connection lines, exchange of necessary connection apparatus in case of leakage	2 Years
8. Detailed control of the drive pistons (min bar - max bar test) Result: piston change in case of positive	2 Years
9. Control of hydraulic unit electrical connections	2 Years
10. Loop sensor control, adjustment of the detection level if necessary	6 Months
11. Functionality check of all electrical-electronic circuit elements, maintenance when any other condition is observed	2 Years
12. Required control of the button receiver if necessary	2 Months
13. Remote control battery replacement	6 Months
14. Drive piston replacement as needed	2 Years
15. Solenoid valve change if necessary	2 Years
16. Replacement of leakage current relay and contactor as required	2 Years
17. Detailed cleaning of the electronic control unit	6 Months
18. Connection control if there is traffic light in the system	6 Months
19. Synchronization control of the system if there is a boom barrier, plate recognition system etc.	6 Months
20. Checking the viscosity of hydraulic oil, changing the hydraulic performance oil in viscosity loss	2 Years
21. Check and clean the connection bolts of the intervention cover	2 Months
22. Checking, cleaning and grease coating of piston bearing joints	2 Months
23. Checking, cleaning and grease coating of upper body bearing joints	2 Months
24. General cleaning of RoadBlocker	6 Months
25. Drain motor float control and cleaning	2 Months
26. Control of top warning signs and installing warning signs if necessary	2 Months
27. Replacement of gear pump when necessary	2 Years
28. Main chassis and body control, crack - notch and breakage detection and taking necessary actions	2 Months
29. Control of the twin locking mechanism on the drive piston	6 Months
30. Cleaning of sand, gravel etc. on the front and side surfaces	Instant

H	TELESCOPIC ROAD BLOCKER TROUBLESHOOTING
---	---

FAILURE	CAUSE	SUGGESTION
Is the system not working?	Electric power can be cut off	Check the automatic fuse in the electrical panel.
Barrier not working with remote control?	The battery of the remote control is exhausted, the control memory may have been erased or corrupted.	Replace the remote control battery with a new one, redefine the controller to the receiver. If not, replace the control with a new one.
There is energy in the system but it does not work?	If the emergency stop button is pressed, the message cables may be broken.	Check the emergency stop button, check whether the message cables are disconnected or disconnected.
The barrier is running in the direction of downward descent, does not work in the direction of the upward direction?	Safety sensors do not see each other, the solenoid valves coil may be damaged.	Make sure that the safety sensors are not obstructed by obstructions, make sure the cables are not broken or are in place. Temporarily relocate with the other valve to ensure that the steering valve is not defective.
The system is running the engine, the barrier does not move?	Solenoid valves may not be energized.	Ask the technical service for help.

STOP GRUP A.Ş.[®]

I STOP GRUP CERTIFICATIONS

You can see the documents of our products that we produce and the quality of our service in Turkish and World standards.



WARRANTY CERTIFICATE

The products that are manufactured under the brand of **STOP BARIYER[®]** which are hydraulic bollards, manual bollards, fixed bollards, road blockers, mechanical tire killers, automatic tire killers and all the parts that make up these are in the cover of these warranty certificate

STOP GRUP GÜVENLİK SİSTEMLERİ İNŞAAT SANAYİ VE TİCARET A.Ş.

WARRANTY CERTIFICATE APPLICATION PRINCIPLES

1. The warranty period starts from the delivery date of the goods and is 2 (two) years.
2. All parts of the goods are covered by our company's warranty.
3. In case of malfunction within the warranty period, the time spent in the repair is added to the warranty period. The repair period of the goods is maximum 30 working days. This period starts from the date of notification to the service station of the defect related to the product, the seller, the dealer agent, the representative, the importer or the manufacturer of the goods in the absence of the service station. If the failure of the industrial property is not cleared within 15 working days, the manufacturer or importer; Until the repair of the goods is completed, it has to allocate another industrial goods with similar characteristics to the consumer's use.
4. In case of malfunction of the goods within the warranty period due to both material and workmanship and assembly defects, the cost of the replaced labor or any other reason will be repaired without any charge.
- 5- For The Product;
 - The continuity of the non-injury of the goods as a result of more than two repetition of the same defect or of more than four of the different malfunctions within 1 year from the date of delivery within the warranty period,
 - Exceeding the maximum time required for repair,
 - The absence of a service station In the event that it is determined that it is not possible to repair the defect by a dealer, dealer, agency, representative, importer or manufacturer, respectively, free replacement will be made.
- 6- Malfunctions arising from the use of the product in contravention of the instructions in the manual and / or failure to carry out periodic maintenance on the maintenance table in the operating instructions are not covered by the warranty.

INVOICE DATE AND NO: DELIVERY DATE AND PLACE:	PRODUCT'S	BRAND: MODEL: BANDROL AND SERIAL NO:
THE WARRANTY PERIOD IS SPECIFIED UP IN THE LIST.		

MANUFACTURER'S SEAL
SIGNATURE OF THE COMPANY
AUTHOR:

BUYER'S SEAL
SIGNATURE OF THE COMPANY AUTHOR:

STOP GRUP A.Ş.®

K STOP GRUP REFERENCES



Stop Grup Güvenlik Sistemleri İnş. San. Tic. A.Ş.

Phone: +90 212 868 08 90

Güzelce Mah. İskenderun Cad. No:6 Büyükçekmece İstanbul, Türkiye

Fax: +90 212 868 08 87